

GUADELOUPE

Revenu
Affiches
Automobiles
Connaissements
Copes
Dimension
Epargne Scolaire
Effets
Quittances
Roles d'Equipeage

The territory consists of the two main linked islands Basse Terre and Grande Terre, several smaller adjoining islands, and for a long time, the more distant St Barthelemy plus half of St Martin (the other half of which is Dutch).

Originally "discovered" by Christopher Columbus in 1493, for several centuries it was variously occupied by British and French, and even briefly by Sweden. In 1815 the Treaty of Vienna gave permanent control to France.

Sugar cane (and by-products such as rum) was always the main export, with labour supplied by a large black slave population. Slavery was abolished in 1848, and later that century much indentured labour from India provided an alternative work force. Even today, ethnic and economic disparities are still a cause of major social unrest.

In 1946 the colony of Guadeloupe became an overseas department of France.



Until 1932 revenue stamps of France were normally used in Guadeloupe, and can be recognised by cancels (GUADELOUPE in a rectangle of dots was often used). Emergency needs brought about the complex QUITTANCES provisionals of 1904, and special rates for Caribbean territories from the 1890s to the 1920s resulted in local surcharges. on Dimension and Effets stamps. Regular Daussy designs appropriated with the island name came into use from 1932 until the end of 1946, when normal French revenues were again brought back, as Guadeloupe ceased being a colony.

In 2007 St Barthelemy (often now called St Barts) opted for autonomy as an "Overseas Collective" and in 2012 severed links with the EEC, as it was increasingly an upscale tourist destination from North America. In the same year, French St Martin also seceded from administration from Guadeloupe and became another autonomous Collectivity, tourism and easy access to neighbouring Dutch St Martin being the economic reasons.

For additional information and scans, we wish to thank :
 Andrew McLellan,
 Stamps International, Krakau.

GUADELOUPE REVENUE

These stamps inscribed TIMBRE FISCAL were for general purpose duty.



1933. Daussy key type with lined background. Inscribed GUADELOUPE in black.

1. 1c bistre, brown, blue & black 5.00
2. 2c bistre, brown, blue & black 5.00
3. 5c bistre, brown, blue & black 5.00
- (4. 10c bistre, brown, blue & black)
5. 15c bistre, brown, blue & black 5.00
6. 20c bistre, brown, blue & black 5.00
7. 30c bistre, brown, blue & black 5.00
8. 70c bistre, brown, blue & black 7.50
9. 75c bistre, brown, blue & black 7.50
10. 1F green, dark green, red & black ... 5.00
11. 2F green, dark green, red & black ... 5.00
12. 3F green, dark green, red & black ... 5.00
13. 4F green, dark green, red & black ... 7.50
14. 5F green, dark green, red & black ... 5.00
15. 6F green, dark green, red & black ... 7.50
16. 7F green, dark green, red & black . 10.00
17. 8F green, dark green, red & black . 15.00
18. 9F green, dark green, red & black . 15.00
19. 10F blue, dark blue, red & black 10.00
20. 12F blue, dark blue, red & black 50.00
21. 15F blue, dark blue, red & black 15.00
22. 18F blue, dark blue, red & black 35.00
23. 20F blue, dark blue, red & black 15.00
24. 25F blue, dark blue, red & black 25.00
25. 30F blue, dark blue, red & black 25.00
26. 40F blue, dark blue, red & black 35.00
27. 50F blue, dark blue, red & black 25.00
28. 60F blue, dark blue, red & black 35.00
29. 100F violet, purple, red & black 75.00

For stamps of France of this type, ovpt TARIF DOUBLE or TARIF QUADRUPLE, see under EFFETS.



1936. Daussy key type now with diamonds background. No wmk.

30. 10c lilac, purple, red & black 5.00
31. 90c lilac, purple, red & black 10.00



1936-46. Sane Daussy design, but with wmk.

- 32. 5c lilac, purple, red & black 5.00
- 33. 10c lilac, purple, red & black 5.00
- 34. 15c lilac, purple, red & black 7.50
- 35. 20c lilac, purple, red & black 5.00
- 36. 25c lilac, purple, red & black 75.00
- 37. 30c lilac, purple, red & black 7.50
- 38. 40c lilac, purple, red & black 7.50
- 39. 45c lilac, purple, red & black 10.00
- 40. 50c lilac, purple, red & black 5.00
- 41. 60c lilac, purple, red & black 7.50
- 42. 75c lilac, purple, red & black 5.00
- 43. 80c lilac, purple, red & black 7.50
- 44. 90c lilac, purple, red & black 10.00
- 45. 1F rose, purple, blue & black 5.00
- 46. 1F50 rose, purple, blue & black 10.00
- 47. 2F rose, purple, blue & black 7.50
- 48. 3F rose, purple, blue & black 7.50
- 49. 4F rose, purple, blue & black 10.00
- 50. 5F rose, purple, blue & black 7.50
- 51. 12F blue, dark blue, red & black 75.00
- 52. 100F blue, dark blue, red & black .. 35.00



1941. Ovpt FISCAL on Quittance stamps of France of 1891, surcharged with two bars through previous value.

- 55. 20c on 25c blue & black 15.00
- 56. 40c on 50c green & black 15.00
- 57. 50c on 1F violet & black 15.00



1941. Ovpt FISCAL on Quittance stamps of France of 1914, surcharged with three vertical bars through previous value.

- 58. 30c on 50c blue & red 15.00



1941. Ovpt FISCAL on Quittance stamps of Guadeloupe of 1932, surcharged with two bars through previous value.

- 59. 20c on 25c blue & black 15.00
- 60. 40c on 50c green & black 15.00



1942. Timbre Fiscal of 1933, surcharged, with two bars through previous value.

- 61. 30c on 1c bistre, brown, blue & black 15.00
- 62. 30c on 2c bistre, brown, blue & black 15.00



1942. Postage stamps of 1928 etc, ovpt FISCAL (14mm), surcharged, and bars (various styles as illus) over previous value.

- 65. 5c on 45c blue-green & grey 20.00
- 66. 10c on 1c mauve & deep yellow ... 15.00
- 67. 10c on 1F75 orange & magenta 20.00
- 67a. larger "c" closer to "10" 20.00
- 68. 20c on 1c mauve & deep yellow † . 15.00

67a

- 69. 20c on 1F60 buff & magenta 20.00
- 70. 50c on 1F25 orange & carmine 20.00
- 71. 80c on 1F40 magenta & pale blue . 25.00
- 72. 1F on 45c blue-green & grey 35.00

‡ For the above and the following sets, all but one of the surcharges are unique to one set only. However, the 20c on 1c marked ‡ comes in both sets - check dimensions of FISCAL.



Reported by Duston, but not seen by us.

1969. Small format Marianne-Auto type, inscribed GUADELOUPE in black.

1. 65F green
2. 1320F green & blue on rose
3. 2640F green & blue on rose
4. 3300F green & blue on rose
5. 5280F green & black on rose
6. 6600F green & black on rose

1944. Postage stamps of 1928 etc, ovpt with smaller FISCAL (11mm), surcharged, and bars (various styles as illus) over previous value.

- 73. 10c on 2c scarlet & black 15.00
- 74. 20c on 1c mauve & deep yellow ‡ . 20.00
- 75. 20c on 2c scarlet & black 15.00
- 76. 30c on 2F50 green & vermilion 20.00
- 77. 50c on 3c magenta & deep yellow 15.00
- 78. 80c on 3c magenta & deep yellow 20.00
- 79. 2F on 3c magenta & deep yellow .. 20.00



1945. Daussy design, printed in Brazil. Perf 12.

- 80. 10c lilac, purple & red *5.00
- 81. 20c lilac, purple & red *5.00
- 82. 40c lilac, purple & red *7.50
- 83. 50c lilac, purple & red *7.50
- 84. 60c lilac, purple & red *10.00
- 85. 80c lilac, purple & red *10.00

GUADELOUPE AFFICHES



1934. Affiches key type of France of 1904, inscribed GUADELOUPE in black.

- 1. 5c & 2/10 violet & black 25.00
- 2. 10c & 2/10 rose & black 25.00

GADELOUPE AUTOMOBILES

GADELOUPE CONNAISSEMENTS

For use on multiple set bills of lading or transport documents. The stamp with value (A) was attached to the first document, and the "control" stamps (B) to necessary copies.



1932. Large format Connaissements type inscribed GUADELOUPE in black.

	A	B
1. 1F & 2/10 green & black	15.00	10.00
2. 2F & 2/10 rose & BLACK ...	25.00	10.00



1936. Daussy key type.

	A	B
3. 1F20 green & black	*100.00	
	*100.00	

Possibly unissued.

X

1937. Same Daussy key type.

	A	B
4. 16F violet, green & black	15.00	10.00



1946. Surcharged with large "X" (type I: vertical "X", type II: horizontal "X").

	A	B
5. 32F on 16F violet green & black (type I)	25.00	-
5a. Type II	25.00	-

GADELOUPE COPIES



1932. Daussy key type, inscribed GUADELOUPE in black.

1. 1F blue, red & black	20.00
2. 2F lilac, red & black	15.00
3. 4F orange, red & black	20.00
4. 20F dark red, red & black	25.00

GADELOUPE DIMENSION

Around the 1920s French revenue stamps were normally used, but these surcharges on Dimension stamps were required to meet special rates introduced for Guadeloupe. Note that some other similar surcharges, but different values or style, were made in metropolitan France in the same period.



1919. Dimension stamps of France of 1892, handstamped diagonally **TARIF PORTE A ...** in blue or black, 2½mm high (normally inverted reading down, but can vary). Values expressed as "fr", "FR", "frs" or "Frs", as indicated below.

- | | |
|---|-------|
| 1. 1 fr on 50c & 2/10 brown | 15.00 |
| 2. 2 fr on 1F & 2/10 blue | 20.00 |
| 3. 2 FR on 1F & 2/10 blue | 20.00 |
| 3a. double ovpt | 30.00 |
| 4. 2 frs on 1F & 2/10 blue | 30.00 |
| 5. 3 fr on 1F50 & 2/10 lilac | 30.00 |
| 6. 3 Fr on 1F50 & 2/10 lilac | 30.00 |
| 7. 3 Frs on 1F50 & 2/10 lilac | 30.00 |
| 8. 4 fr on 2F & 2/10 green & brown | 50.00 |



1921. Further surcharges (larger, 4mm high), same text, on above surcharged issue.

- | | |
|--|-------|
| 9. 2 FRS on 1 fr on 50c & 2/10 brown | 25.00 |
| 10. 4 FRS on 2 fr on 1F & 2/10 blue | 30.00 |
| 11. 4 FRS on 2 FR on 1F & 2/10 blue | 30.00 |
| 11a. original ovpt double | 50.00 |
| 12. 6 FRS on 3 fr on 1F50 & 2/10 lilac . | 50.00 |
| 13. 6 FRS on 3 Fr on 1F50 & 2/10 lilac | 50.00 |
| 14. 6 FRS on 3 Frs on 1F50 & 2/10 lilac | 50.00 |



1921. Issue of 1919, with red manus surcharge (R) to adjust tax value.

- | | |
|---|-------|
| 15. 4 (R) on 2 FR on 1F & 2/10 blue | 50.00 |
| 16. 6 (R) on 3 Fr on 1F50 & 2/10 lilac .. | 50.00 |

Duston states the underlying original surcharge differently, but may be in error. Confirmation from readers is requested. Other pen surcharges may exist.



1921. Dimension stamps of France of 1892, handstamped diagonally **TARIF PORTE A ...**, 4mm high (normally reading up). Values expressed as **F^{RS}**.

- | | |
|---------------------------------------|--------|
| 17. 2 FRS on 50c & 2/10 brown | 30.00 |
| 18. 6 FRFS on 1F50 & 2/10 lilac | 50.00 |
| 19. 12 FRS on 3F & 2/10 rose & blue | 200.00 |



1922. Dimension stamp of France of 1918, handstamped "Tarif porté à ... francs" diagonally, reading up.

- | | |
|--------------------------------------|-------|
| 20. 2francs on 1F bistre & red | 10.00 |
| 20a. ovpt double | 20.00 |
| 21. 4 francs on 2F blue & red | 15.00 |
| 21a. ovpt double | 30.00 |
| 22. 6 francs on 3F lilac & rd | 20.00 |
| 22a. ovpt double | 50.00 |



1922. Postage stamp of 1922 ovpt **DIMENSION** and surcharged.

- | | |
|--------------------------------|-------|
| 23. 2 francs on 5c green | 25.00 |
|--------------------------------|-------|



1932. Daussy key type, inscribed **GADELOUPE** in black.

- | | |
|------------------------------------|-------|
| 30. 2F blue & black | 5.00 |
| 31. 4F green & black | 7.50 |
| 32. 6F rose & black | 10.00 |
| 33. 8F orange, blue & black | 7.50 |
| 34. 12F green & black | 10.00 |
| 35. 16F rose, blue & black | 15.00 |
| 36. 24F lilac, green & black | 20.00 |

x

1943. Provisional. Dimension stamps of France of 1928, ovpt **HUIT (=8)**, **OR** douze (= 12).

- | | |
|-----------------------------------|-------|
| 37. HUIT on 3F blue | 25.00 |
| 38. DOUZE on 3F blue | 75.00 |



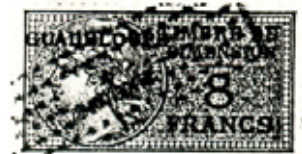
1945. Daussy key type.

- | | |
|---------------------------------|-------|
| 39. 4F green, red & black | 10.00 |
| 40. 12F blue, red & black | 30.00 |



1945. Daussy key type, printed in Brazil.

- | | |
|---------------------------------|-------|
| 41. 8F orange & dark blue | 10.00 |
|---------------------------------|-------|



1945 etc. Daussy key type, new colours and new values. With wmk.

- | | |
|-----------------------------------|-------|
| 42. 4F bistre, blue & black | 5.00 |
| 42a. no wmk | 20.00 |
| 43. 8F bistre & black | 5.00 |
| 44. 12F blue & black | 5.00 |
| 45. 15F red & black | 10.00 |
| (46. 24F rose & black) | |
| (47. 32F lilac & black) | |

The 24F and 32F were issued, but have not been seen in modern times.

GUADELOUPE EFFETS

Normally, regular Effets stamps of France were used in Guadeloupe (can sometimes be recognised by the cancel). In 1899, and again in 1926-33, special rates were applied in Guadeloupe, needing local handstamped surcharges, as listed below. For the 1899 issues, mint remainders are found more easily than used.

TARIF TRIPLE handstamps

Type A : "**Tarif triplé**" in upright, bold letters.

Type B : "*Tarif triplé*" in thin italic letters.



1899. "Tarif triplé" handstamped (normally horizontal, but can vary) on issue of France of 1879 (no cartouche round value). Imperf.

	A	B
1. 45c grey & blue	25.00	50.00
2. 1F grey & lilac	25.00	-
3. 2F grey & lilac	-	50.00
4. 2F50 grey & lilac	75.00	-
5. 3F grey & carmine	35.00	-
6. 3F50F grey & carmine	35.00	-
7. 4F grey & carmine	35.00	50.00
8. 4F50 grey & carmine	50.00	-
9. 5F grey & carmine	35.00	-
10. 5F50 grey & green	50.00	65.00
11. 7F50 grey & green	65.00	-



1899. "Tarif triplé" handstamped (normally horizontal, but can vary) on issue of France of 1880 (with cartouche round value). Imperf.

	A	B
12. 5c grey & blue	25.00	-
13. 10c grey & blue	25.00	-
14. 15c grey & blue	25.00	-
15. 20c grey & blue	25.00	-
16. 25c grey & blue	25.00	-
17. 30c grey & blue	25.00	-
18. 35c grey & blue	25.00	75.00
19. 40c grey & blue	25.00	75.00
20. 50c grey & violet	25.00	-
21. 1F grey & violet	25.00	-
22. 2F grey & violet	25.00	-
23. 6F grey & green	50.00	65.00
24. 6F50 grey & green	50.00	-
25. 7F grey & green	50.00	-
26. 8F grey & black	65.00	100.00
27. 8F50 grey & black	65.00	100.00
28. 9F grey & black	65.00	100.00
29. 9F50 grey & black	100.00	-
30. 10F grey & black	100.00	-

1899. "Tarif triplé" handstamped (normally horizontal, but can vary) on issue of France of 1881 (same design with cartouche round value), now perf 14.

	A	B
31. 5c grey & blue	15.00	-
32. 10c grey & blue	15.00	-
33. 20c grey & blue	-	25.00
34. 25c grey & blue	25.00	-
35. 30c grey & blue	-	25.00
36. 35c grey & blue	-	25.00
37. 40c grey & blue	-	25.00
38. 45c grey & violet	-	35.00
39. 1F grey & violet	-	35.00
40. 1F50 grey & violet	35.00	25.00
41. 2F50 grey & violet	-	25.00
42. 3F grey & violet	-	30.00
43. 5F grey & violet	-	35.00
44. 7F50 grey & green	-	50.00
45. 10F grey & black	-	35.00
46. 15F grey & black	-	50.00
47. 20F grey & black	-	65.00
48. 25F grey & black	-	75.00
49. 35F grey & black	-	100.00

c.1900. Unused remainders of various of the above issues had the "Tarif triplé" surcharge deleted in manuscript, to use at original rates. Surviving examples are mostly known only mint, and may not have been issued.



1899. "Tarif triplé" handstamped (normally vertical, reading down) on issue of France of 1892.

	A	B
50. 10c grey & black	20.00	25.00
50a. ovpt reading down	-	35.00
51. 15c grey & black	20.00	25.00
51a. ovpt double	75.00	-
52. 25c grey & black	10.00	20.00
53. 45c grey & black	20.00	25.00
53a. ovpt double	75.00	-
54. 50c grey & black	-	20.00
55. 7F50 grey & maroon	-	75.00

TARIF DOUBLE handstamps



1926. Effets stamps of France of 1900 (range of document value indicated on the stamp), handstamped TARIF DOUBLE in red (R).

60. 2F50 grey & blue (R)	50.00
61. 3F grey & blue (R)	50.00
62. 5F grey & green (R)	50.00
63. 8F50 grey & lilac (R)	50.00
64. 9F grey & lilac (R)	50.00
65. 9F50 grey & lilac (R)	50.00
66. 15F grey & carmine (R)	50.00
67. 20F grey & carmine (R)	50.00
68. 25F grey & carmine (R)	50.00

1926. Same. but handstamped in blue (B).

69. 6F50 grey & lilac (B)	50.00
70. 9F grey & lilac (B)	50.00
71. 25F grey & red (B)	50.00



1926. Effets stamps of France of 1921 (only the tax value indicated on the stamp), handstamped TARIF DOUBLE in red (R).

75. 5c bisre & black (R)	35.00
76. 30c bisre & black (R)	35.00
77. 40c bisre & black (R)	35.00
78. 45c bisre & black (R)	35.00
79. 2F50 bistre & red (R)	35.00
80. 4F bistre & red (R)	35.00
81. 6F bistre & red (R)	35.00
82. 7F bistre & red (R)	35.00
83. 10F bistre & red (R)	35.00

84. 25F bistre & red (R)	35.00
1926. Same. but handstamped in blue (B).	
85. 10c bistre & black (B)	20.00
86. 30c bistre & black (B)	25.00
87. 45c bistre & black (B)	30.00
88. 2F50 bisre & red (B)	50.00
89. 10F bistre & red (B)	50.00
90. 30F bistre & red (B)	50.00



A



C

1926. Timbre Fiscal stamps of France of 1925, ovpt TARIF DOUBLE, a) ovpt 30mm wide, B) ovpt 26 1/2 mm wide, C) ovpt 22 1/2 mm wide, in black (BL), or in blue (B).

	(BL)	(B)
100. 10c bistre, brown & blue	-	10.00
101. 20c bistre, brown & blue	-	10.00
102. 30c bistre, brown & blue	-	10.00
103. 40c bistre, brown & blue	-	10.00
104. 1F green, dark green & red .	10.00	10.00
105. 2F green, dark green & red .	10.00	10.00
106. 3F green, dark green & red .	10.00	10.00
107. 4F green, dark green & red .	10.00	10.00
108. 5F green, dark green & red .	10.00	10.00
109. 6F green, dark green & red .	10.00	10.00
110. 7F green, dark green & red	-	15.00
111. 8F green, dark green & red	-	15.00
112. 9F green, dark green & red .	15.00	15.00
113. 10F blue, dark blue & red ...	-	10.00
114. 15F blue, dark blue & red	25.00	25.00
115. 20F blue, dark blue & red	25.00	25.00
116. 30F blue, dark blue & red	25.00	25.00
117. 40F blue, dark blue & red	35.00	35.00
118. 50F blue, dark blue & red	30.00	30.00
118a. double ovpt	-	50.00
119. 60F blue, dark blue & red	35.00	35.00

TARIF QUADRULE handstamps

Ovpt types known so far are A) 32 1/2 mm wide, with serifs, B) 26 1/2 mm wide with serifs, C) 23 mm wide sans serif. Those known are indicated (please advise more?).



c1933. Effets stamps of France of 1900 (range of document value indicated on the stamp), handstamped TARIF QUADRUPLE diagonally, normally reading down, all in blue.

120. 35c grey & black	10.00
-----------------------------	-------

121. 1F50 grey & blue C	10.00
122. 2F50 grey & blue C	10.00
123. 3F grey & blue	10.00
124. 5F50 grey & green	15.00
125. 6F50 grey & violet A	15.00
125a. ovpt red=ads uo A	15.00
126. 7F grey & violet	15.00
127. 7F50 grey & violet	15.00
128. 8F50 grey & violet	20.00
129. 9F grey & violet	25.00
130. 9F50 grey & red	25.00
131. 15F grey & red	25.00
132. 25F grey & red	35.00



c1933. Effets stamps of France of 1921 (only the tax value indicated on the stamp), handstamped TARIF QUADRUPLE diagonally, normally reading down, all in blue.

133. 5c bistre & black	10.00
134. 10c bistre & black	10.00
135. 15c bistre & black	10.00
136. 20c bistre & black	10.00
137. 1F50 olive & red	15.00
138. 2 olive & red	15.00
139. 2F50 olive & red	15.00
140. 3F olive & red	15.00
141. 3F50 olive & red	15.00
142. 4F olive & red C	15.00
143. 4F50 olive & red	15.00
144. 5F olive & red	15.00
144a. ovpt double	25.00
145. 6F olive & red	20.00
146. 7F olive & red	20.00
147. 8F olive & red	20.00
148. 9F olive & red	25.00
149. 10F olive & red A	20.00
150. 18F olive & red	25.00
151. 25F olive & red A	25.00
152. 30F olive & red A	35.00
152ba. ovpt reading up A	35.00
152a. ovpt double	50.00

X

c1933. Effets stamp of 1900 (range of document value indicated on the stamp) with TARIF DOUBLE ovpt, further ovpt TARIF QUADRUPLE in blue.

155. 45c grey & black	75.00
-----------------------------	-------



c1933. Timbre Fiscal of France of 1925, handstamped TARIF QUADRUPLE diagonally, normally reading down, all in blue.

160. 10c bistre & blue C	10.00
161. 20c bistre & blue C	10.00
162. 25c bistre & blue	10.00

163. 30c bistre & blue	10.00
164. 40c bistre & blue	10.00
165. 50c bistre & blue C	10.00
166. 1F green & red B	10.00
167. 2F green & red C	15.00
168. 4F green & red	15.00
169. 5F green & red	10.00
170. 6F green & red	15.00
171. 30F blue & red	25.00

GUADELOUPE EPARGNE SCOLAIRE

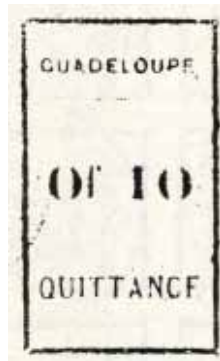
Contribution costs towards school expenses, e.g. exercise books. Strictly speaking these are savings stamps (not revenues) but are listed for the convenience of collectors, as they were grouped with revenues by some previous editors.



c1910. Book & globe. Perf 13½.

1. 5c vermilion 5.00
2. 5c blue 5.00

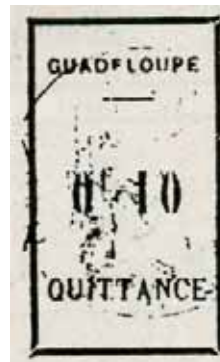
GUADELOUPE QUITTANCES



A



B



C

1904. Typeset design, A) broad "O"s in figure of value and "f" full height; B) medium "O"s in figure of value and "f" almost full height; C) small high "f" (superscript) and thin or very thin "O" or "0"s in figure of value (Duston shows several variants which he classifies as types III, III-IV, and IV). Printed in sheets of 50 with 23 x A, 4 x B, 23 x C. Circular control cachet depicting allegorical figure, in blue-green or in bright blue (B). Imperf.

1. 10c blue (B) 20.00
- Often the cancel is also a circular cachet in blue.



1904. Boxed typeset ovpt on postage stamp of 1900. Various slightly different type sizes, and ornament settings, are known, printed in sheets of 50, in at least two settings. See Duston for details. Perf 14x13½.

2. 10c red & blue 10.00



1922. Postage stamp of 1905, with ovpt "QUITTANCE / à ." and new value.

3. 0F10 on 1c black on bluish 15.00
4. 0F20 on 1c black on bluish 15.00
5. 0F30 on 1c black on bluish 20.00
6. 0F40 on 1c black on bluish 35.00
7. 0F50 on 1c black on bluish 50.00
- 7a. error " r" for "fr" ("f" omitted).. *150.00



1932. Quittances key type of 1891, inscribed GUADELOUPE.

8. 25c blue & black 75.00
9. 50c green & black 15.00
10. 1F violet & black 15.00
11. 2F rose & black 20.00



1932. Recus d'Objets/Quittance key type, inscribed GUADELOUPE.

12. 10c grey, red & black 15.00



1932 Quittances / Virements key type (as
illus, but inscribed GUADELOUPE).

13. 20c orange & red 15.00



1932. Quittance key type for scaled values,
inscribed GUADELOUPE.

14. 30c pale grey & red 15.00

15. 40c olive-grey & red 15.00

16. 50c blue0grey & red 15.00

ROLES D'EQUIPAGE



1921. Roles d'Equipage of France,
handstamped TARIF PORTE A 6 FRS,
diagonally, reading up.

1. 6F on 3F60 varmine 35.00

1a. surcharge inverted 50.00

1b. surcharge double 75.00